



June 8, 2020

Dear Park's Edge Preschool Families:

It has been wonderful welcoming families and furloughed staff back to PEP. Upon your return you may have discovered your child has been moved to the next room. Park's Edge Preschool has been very intentional in keeping children healthy by grouping children chronologically, with their peers, in small groups of ten or less. Even though DCF is allowing child-care centers to return to ratios, as previous of COVID-19 mandates, PEP has decided at this time to stay with the precautionary measures placed on us during the mandate.

Park's Edge Preschool has an action-packed summer for each group of children. All activities must meet DCF licensing, YoungStar and NAC Accreditation standards. The teaching staff are required to inspire each individual child's interests in doing weekly lesson planning for each individualized group.

Upstairs Infant/Toddler Classrooms

Love Bugs (infant 1)—Ms. Terri and Ms. Ruslana (float teacher)

Beautiful Butterflies (infant 2)—Ms. Julie

Darling Dragonflies (toddler thru 2)—Ms. Jennifer and Ms. Mariah

Busy Bees (2-2 ½)—Emily

Lower Level—Preschool Classrooms

Sunshine Room (2 ½-3)(yellow)—Ms. Mary and Ms. Sandra

Fantastic Frogs (3-3 ½)(green)—Ms. Michele* and Ms. Caitlin

Shining Stars (3 ½-4)(blue)—Ms. Melinda and Ms. Emily (float teacher)

Purple Moons (5 years old; entering 5-year-old kindergarten in fall)(purple room)—Ms. Tori

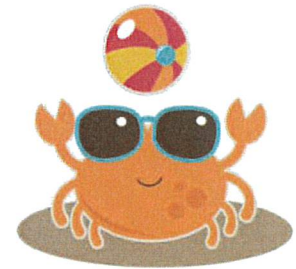
Kurth Hall has been divided into three separate classrooms this summer for school-age children. Children are grouped chronologically, with their peers, in small groups of ten or less. All three classrooms will be open on Monday, June 15th, when we kick off our summer program. Until then 'Younger Snakes' will be grouped with Purple Moons in the Purple Room. The Middle and Older Snakes will be grouped together in Kurth Hall.

Younger Slithering Snakes—Ms. Jenele (returning from furlough full-time after June 12th)

Middle Slithering Snakes—Ms. Anna

Older Slithering Snakes—Mr. Cody and Mr. James

Welcome Ms. Emily! Emily is an Alverno College Student and has joined PEP's team for the summer program. Ms. Emily will be a teacher's assistant and 'runner' in collecting children for families from the downstairs classrooms at the end of the day, to minimize exposure in the classroom.





***Sad Farewell to Ms. Michele, PEP's fantastic teacher** in the Fantastic Frog classroom (age 3 ½ to 4 years old) has returned from furlough for a very short time. Ms. Michele has decided to resign her position at Park's Edge Preschool. Michele has been teaching at Park's Edge Preschool for over twenty years and has decided it is time for a new chapter. Please take time to read Ms. Michele's warm, heart-felt good-bye to families. She is loved very much.

Hello Everyone,

Some of you already know me, but for those who do not; I am 'Ms. Michele'. I have been in the childcare profession for 28 years. I am proud to say that 20½ years have been spent here at Park's Edge Preschool in the Fantastic Frogs classroom.

I started my journey on November 8, 1999. I have been very blessed to grow and thrive alongside the children. While it has been a long and wonderful journey and experience, with many good times, I am sad to say the time has come to say farewell. My last day will be Friday, June 12th.

While here, I have had the privilege of working alongside the best coworkers and greatest teachers anyone could ask to work with. I was blessed with being able to see many children, generations even, of families succeed and flourish through the program.

This includes our very own 'Mr. Cody' and 'Ms. Kristin'. Mr. Cody grew from a 4-year-old into a successful adult. Ms. Kristin starting here as a high school, co-op student and advancing through the years to PEP's Assistant Director. When Ms. Ellen joined our center as a strong Director, lead and guided Park's Edge Preschool to a successful 5-Star rating. It has been an honor to play a part in that.

I am proud to say that all the children at Park's Edge Preschool are blessed to have such wonderful teachers as they do. Your children are truly loved at PEP!

So as God closes one door, and opens another in my life, I would like to say, 'thank you'. You will always be family and I have been able to be part in all your lives. You will be forever in my heart. Love to you all.

Sincerely, Ms. Michele

Ms. Michele's last day is Friday, June 12th. Due to COVID-19 we are not able to have a large farewell reception as we usually do, except for the children in her classroom. Please sign the giant card of well wishes for Ms. Michele or bring a farewell card for her. We will truly miss Michele's warm, animated personality and sense of humor at PEP 😞 Thank you Ms. Michele!

Sincerely,

Ellen M. Kvalheim, Director